

STAGE 6 OFFICE PLAN

1 : 200 @ A3



OFFICE 6A TOTAL USABLE AREA
241 m² / 2,594 ft²

OFFICE 6B TOTAL USABLE AREA
115 m² / 1,238 ft²

OFFICE 6C TOTAL USABLE AREA
19 m² / 204 ft²

LOADING BAY FLOOR LOADING LIMIT
7.5 kPa

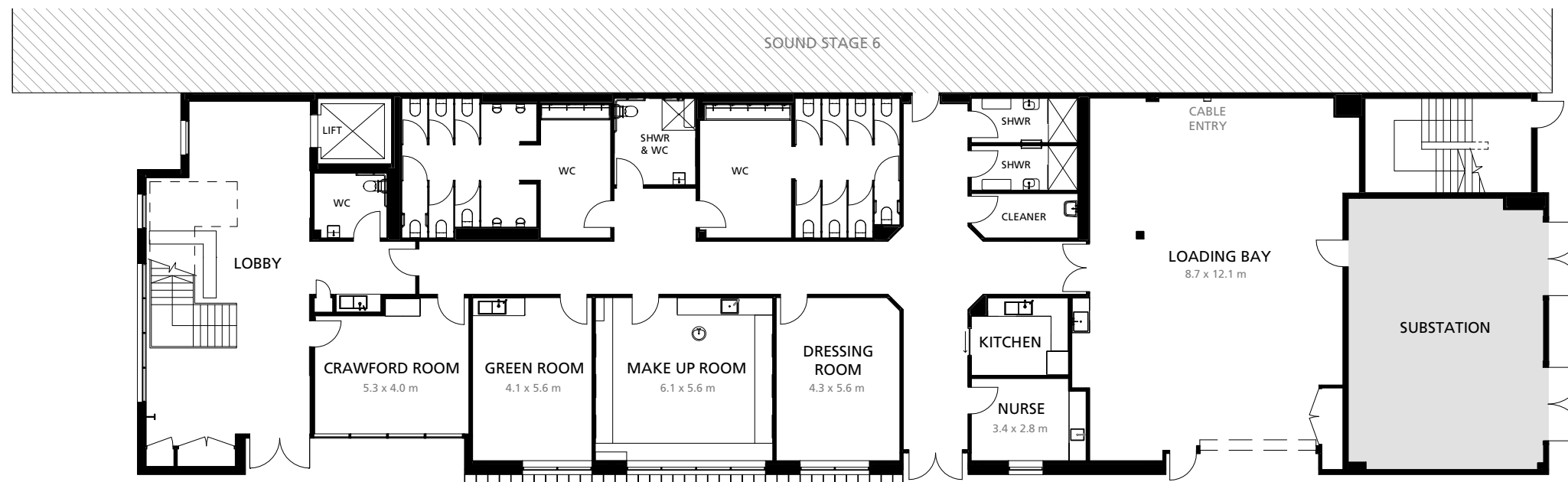


Docklands Studios Melbourne

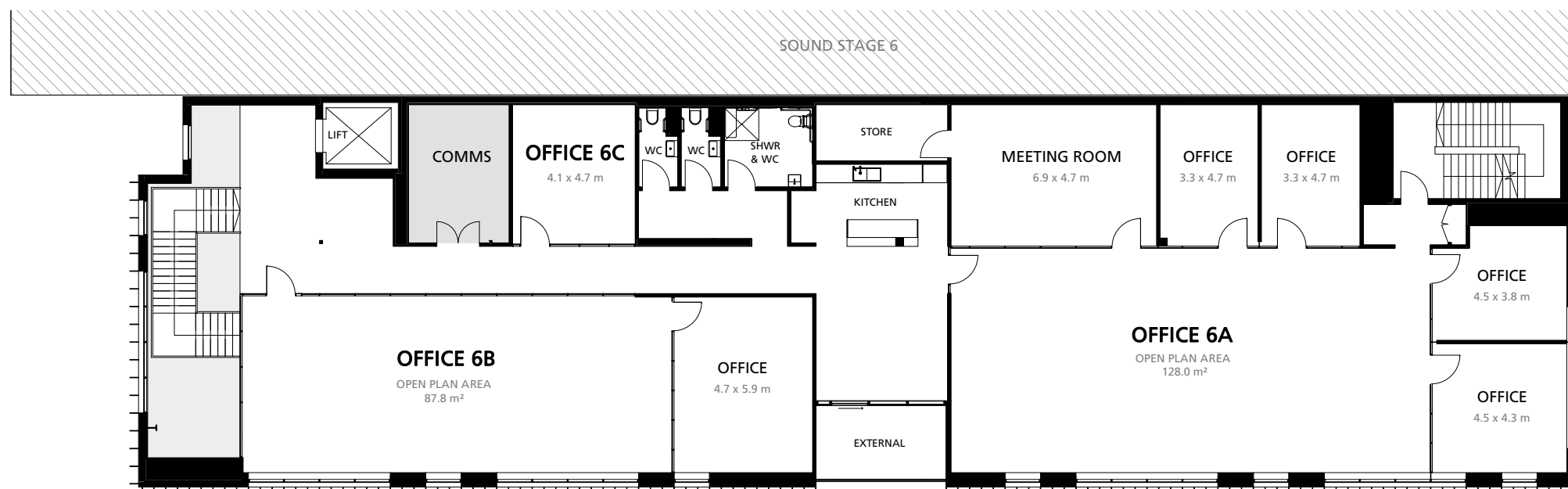
476 Docklands Drive
Docklands VIC 3008

www.dsmelbourne.com

NOV 2021



1 GROUND LEVEL PLAN



2 UPPER LEVEL PLAN